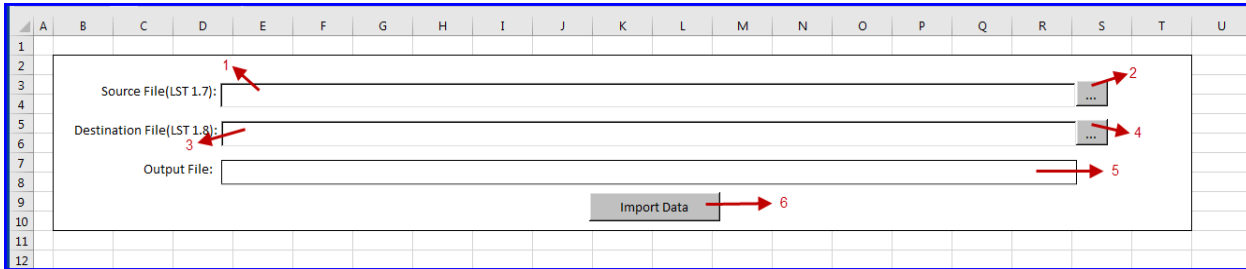




Instructions for LST 1.7 to LST 1.8 Data Transfer Utility

Data Transfer Utility

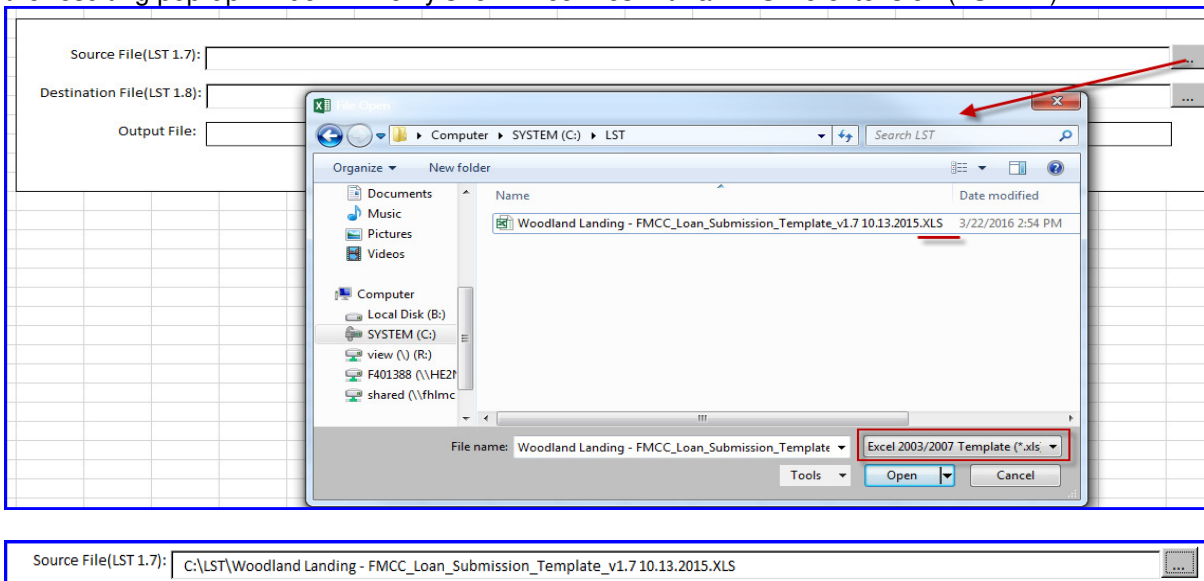
The Data Transfer Utility allows users to transfer data from the older LST 1.7 to the new LST 1.8. Launching the Data Transfer Utility, the main screen displays:



1. Source LST 1.7 File Path and File name.
2. Browse button (to select source LST 1.7 file).
3. Destination LST 1.8 File Path and File name. (Blank LST 1.8)
4. Browse button (to select blank LST 1.8 destination file).
5. Output LST Result file location and name.
6. "Import Data" button to start data import from the LST 1.7 to the destination LST 1.8 template.

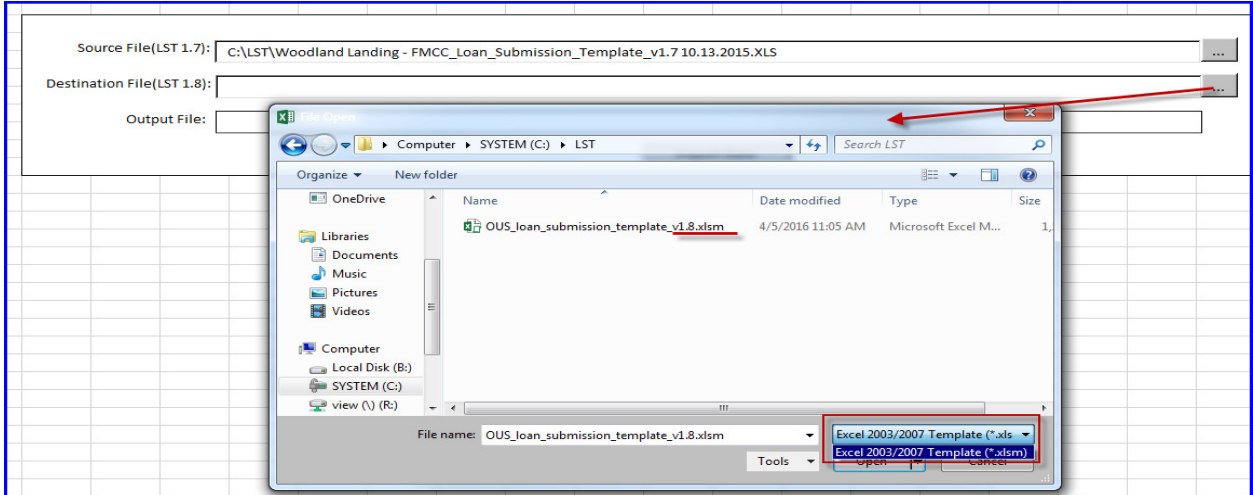
Steps to use utility

1. Using the ellipsis browse button, select the desired LST 1.7, the source LST for data transfer. Please note that the resulting pop-up window will only show Excel files with a .XLS file extension (LST 1.7).

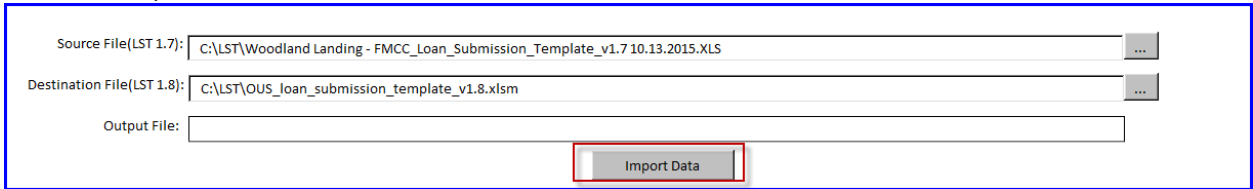




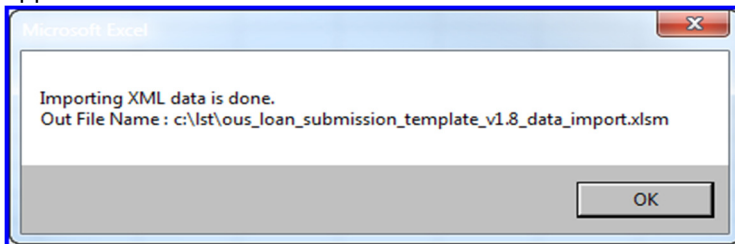
- Using the ellipsis browse button, select the blank LST 1.8 template for data transfer as the destination LST template. Please note that the resulting pop-up window will only show Excel files with a .XLSM file extension (LST 1.8).



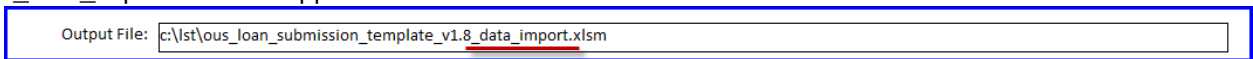
- Click the “Import Data” button to start the data transfer.



- Upon completion of the data transfer process, a pop-up message will display, providing the path of the resulting converted LST 1.8 file and LST name. The output result file will be created with “_data_import” suffix appended to the destination LST name.



- After clicking “OK”, note the location of the saved file. The resulting output file will be created with “_data_import” suffix to appended to the destination LST name and stored in the c:\LST\ folder.



The original blank LST 1.8 template remains unchanged for future use.